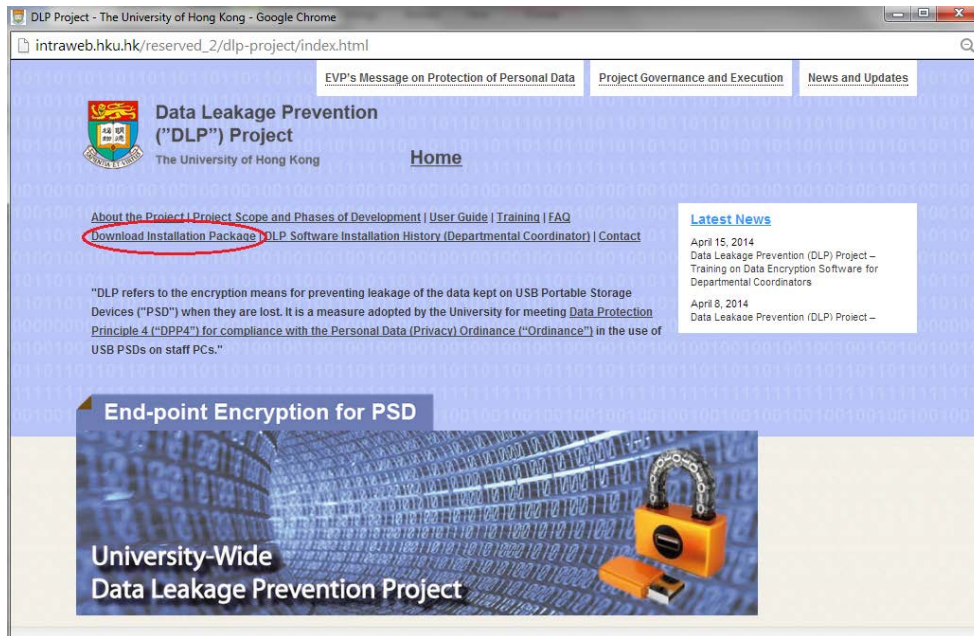
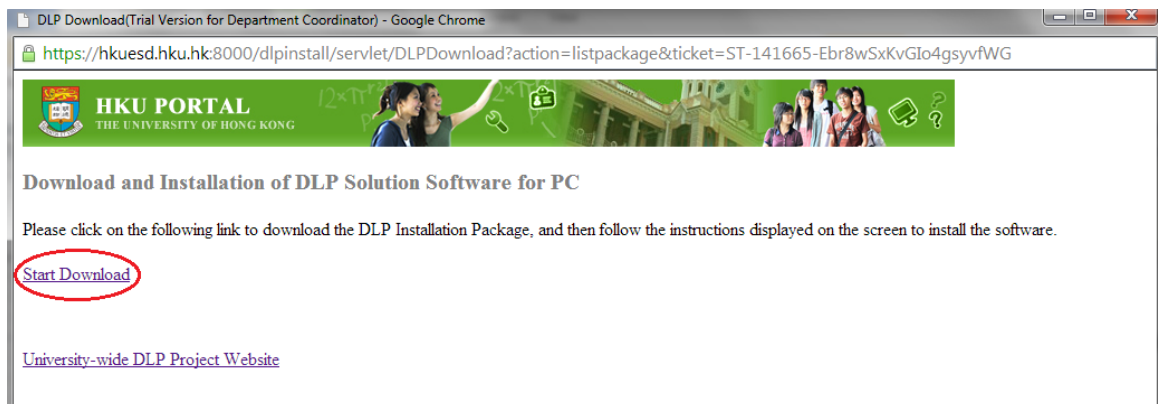


User Guide on Download and Installation of DLP Data Encryption for USB PSD software for Windows PC

- I) Logon HKU portal with your **HKU Portal UID** and **PIN**.
- II) Search **“DLP”**.
- III) Click on the result link and navigate to the DLP Project website.
- IV) Click **“Download Installation package”**.



- V) Click **“Start Download”** to download the DLP software installation package.



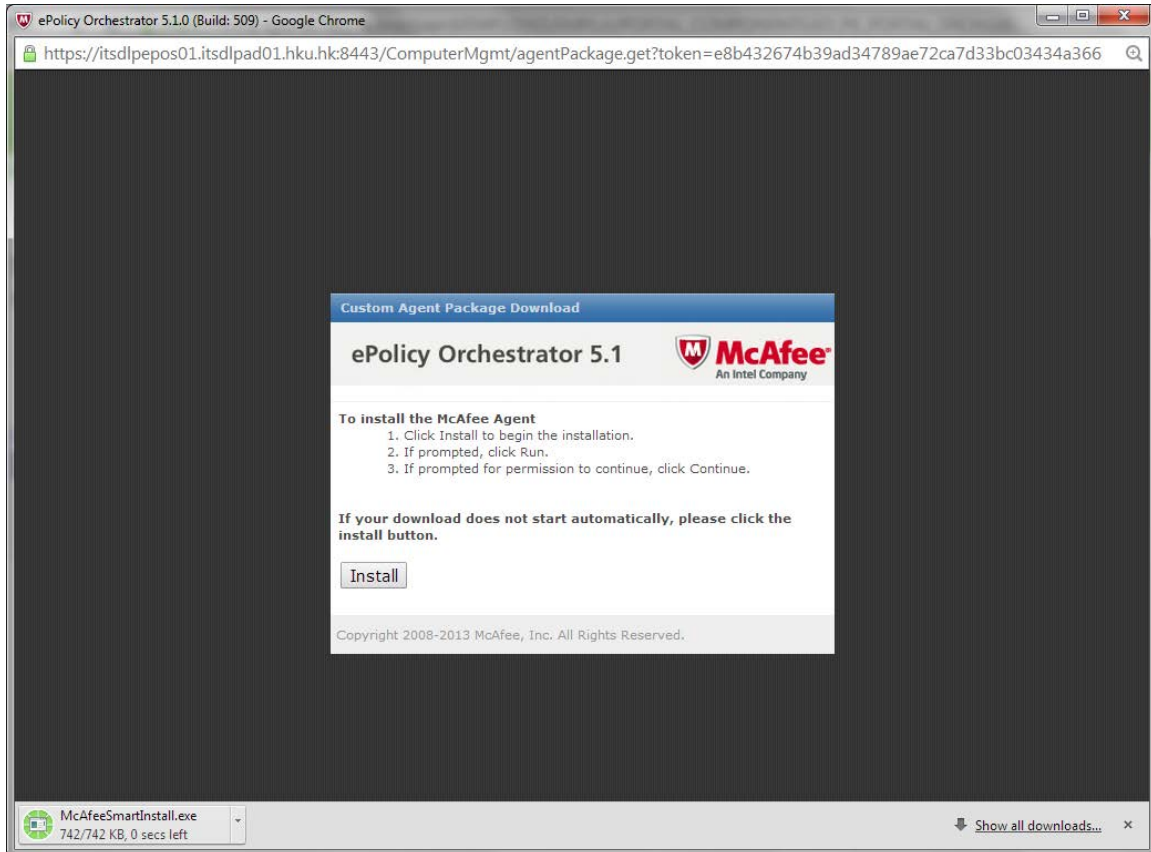
Document Name: DLP Software Deployment Procedure (Chrome version 34.0.1847.116 m)

Version: 1.1

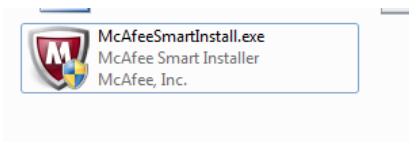
Date: April 9, 2014

Total no. of pages: 7

- VI) You will see the software installation screen. The installation package will be downloaded automatically. Click **“Install”** to download the installation package if the download does not start automatically. The downloaded file will be stored in the default download folder of your browser.



- VII) Double click the downloaded installation package to start installation.



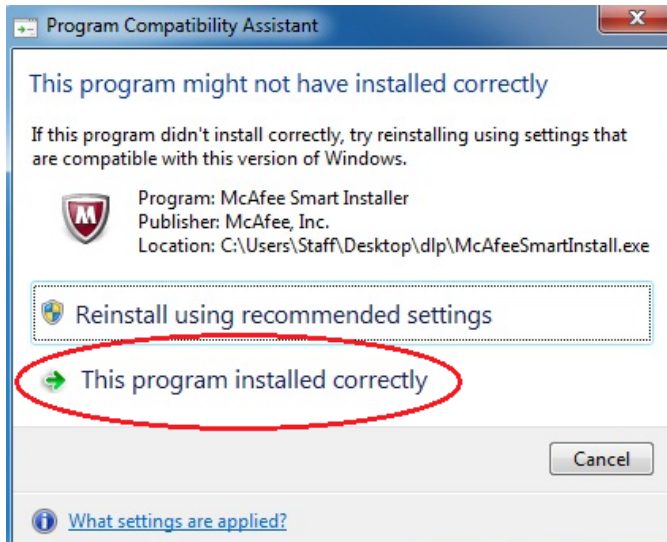
Document Name: DLP Software Deployment Procedure (Chrome version 34.0.1847.116 m)

Version: 1.1

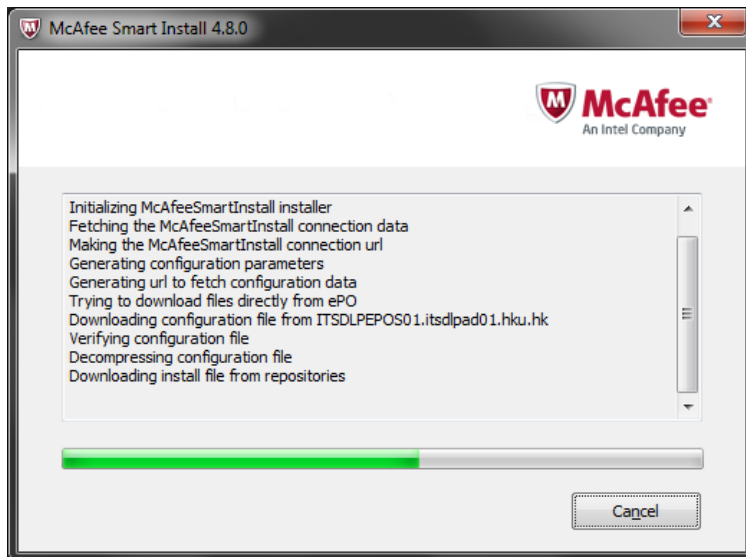
Date: April 9, 2014

Total no. of pages: 7

NOTE: If you find a message pop-up as below from **Windows Program Compatibility Assistant**, select **"This program installed correctly"** to continue.



VIII) The installation package will run.



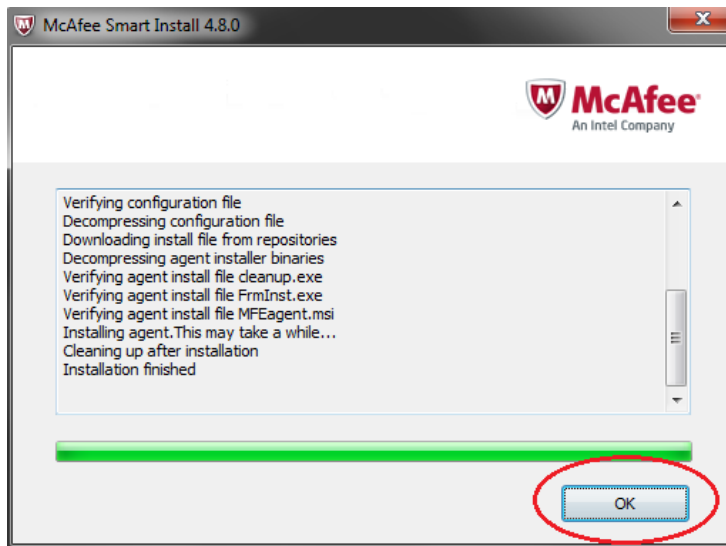
Document Name: DLP Software Deployment Procedure (Chrome version 34.0.1847.116 m)

Version: 1.1

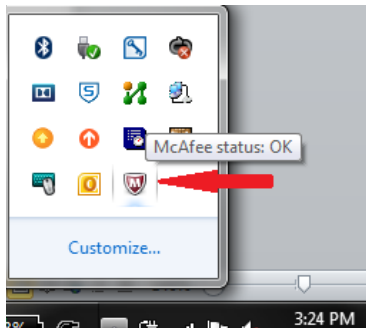
Date: April 9, 2014

Total no. of pages: 7

IX) Click **“OK”** to complete the installation.



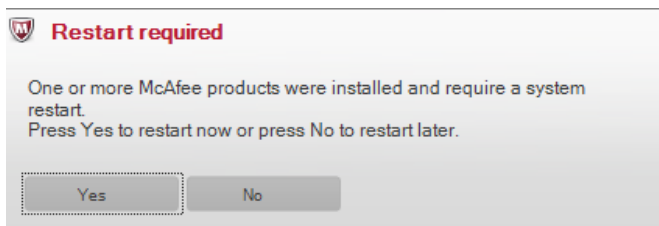
X) After the installation is completed, you will see a McAfee icon same as below appear in the Windows toolbar.




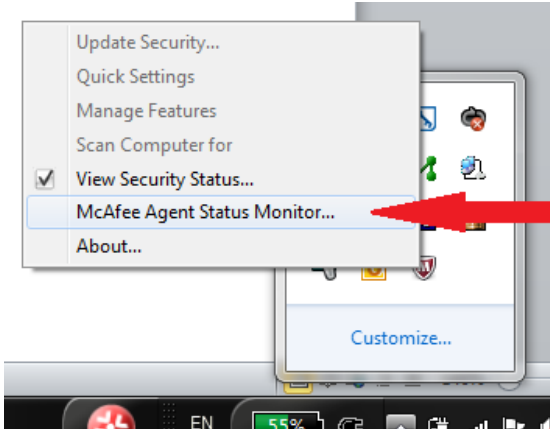
- I) A pop-up message will appear for restart of the machine. You can click "**Restart**" to restart the machine now or click "**Cancel**" to restart later. A restart is required to continue the communication between DLP client and server to complete the policy synchronization.



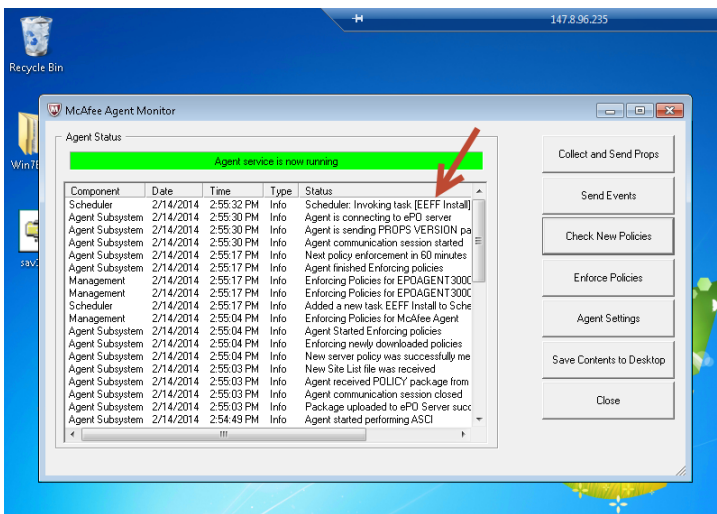
- II) If you do not restart the machine, the pop-up message for restart will be closed after 30 seconds and a reminder message will appear in Windows toolbar to remind you to restart.




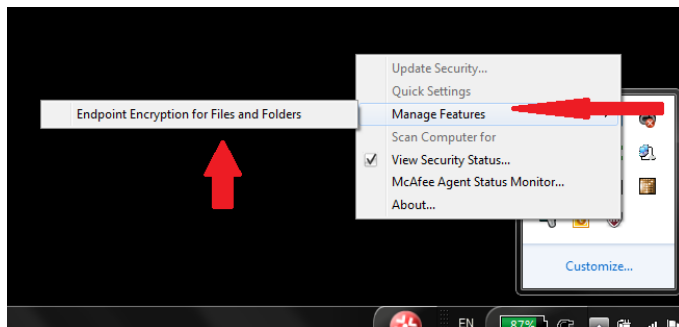
- III) To view the status you can right click the McAfee icon  and select **“McAfee Agent Status Monitor”**.



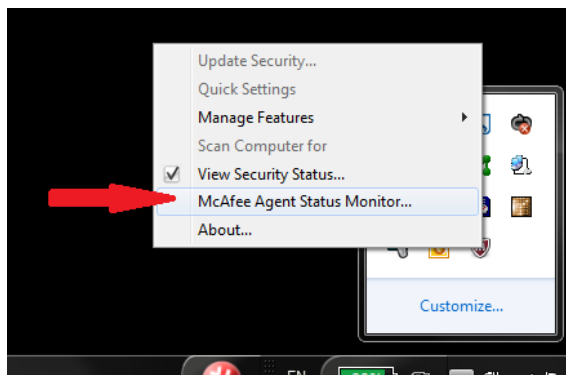
- IV) You can see a task **“EEFF install”** is invoked in the monitor console.



- V) Save your work and restart the machine to enforce the policy synchronization. After restart, click on the McAfee icon  in the Windows toolbar, and then click on “Managed Features” you should find the “Endpoint Encryption for Files and Folders” module.



- VI) Click “McAfee Agent Status Monitor” from McAfee icon.



- VII) Click “Check New Policies” and then “Enforce Policies” buttons to enforce the data encryption policy.

