

Document Name: DLP Software Deployment Procedure (Internet Explorer version 11)

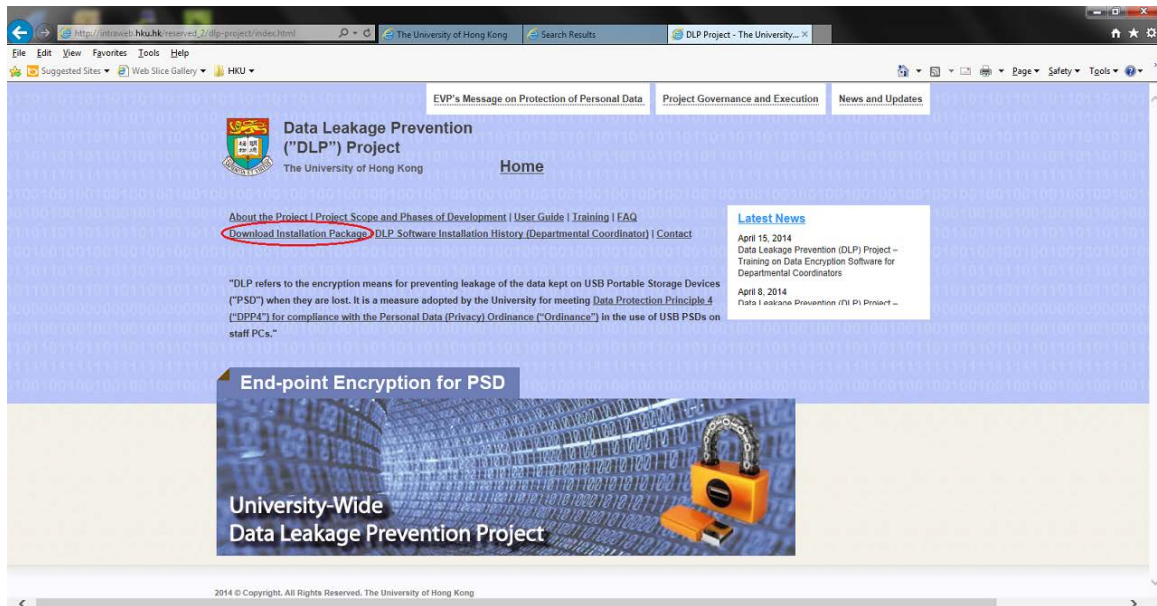
Version: 1.1

Date: April 9, 2014

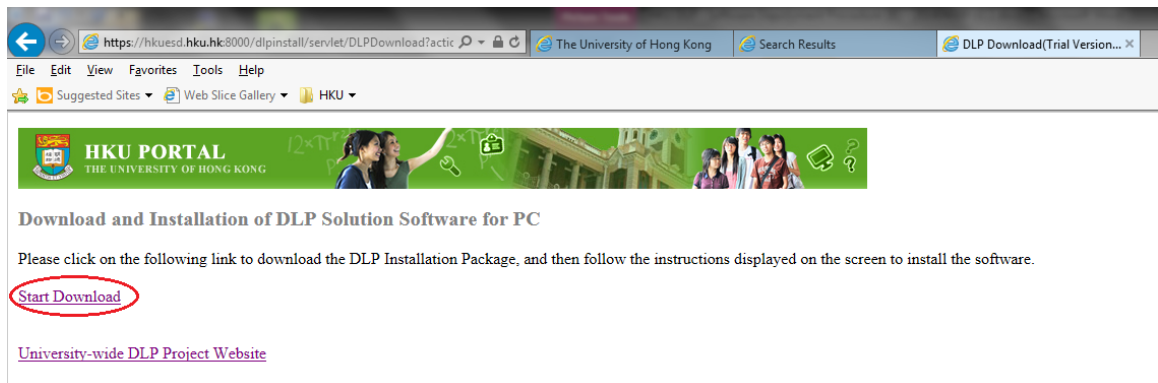
Total no. of pages: 7

## User Guide on Download and Installation of DLP Data Encryption for USB PSD software for Windows PC

- I) Logon HKU portal with your **HKU Portal UID** and **PIN**.
- II) Search **“DLP”**.
- III) Click on the result link and navigate to the DLP Project website.
- IV) Click **“Download Installation package”**.



- V) Click **“Start Download”** to download the DLP software installation package.



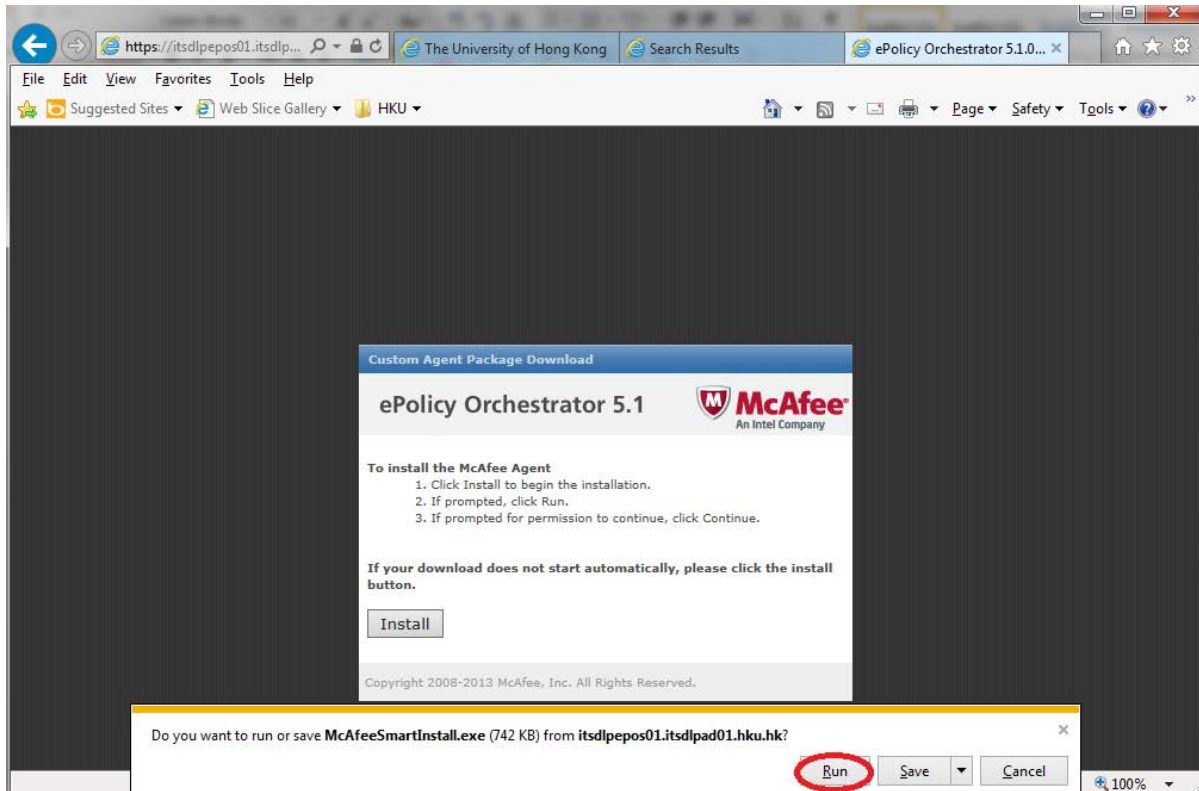
Document Name: DLP Software Deployment Procedure (Internet Explorer version 11)

Version: 1.1

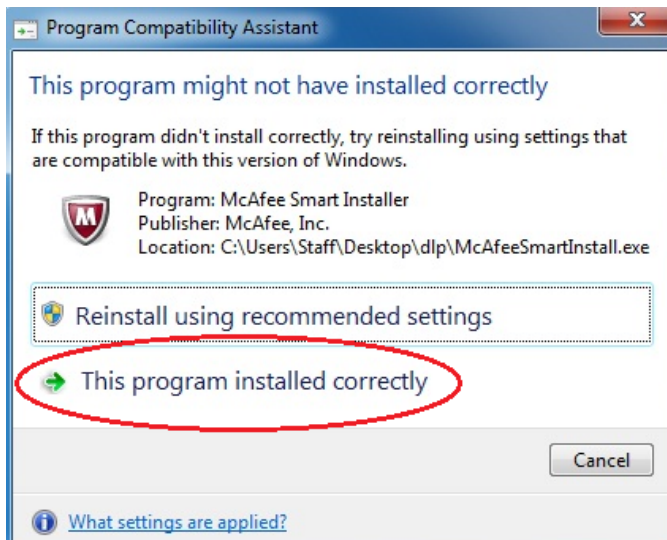
Date: April 9, 2014

Total no. of pages: 7

- VI) You will see the software installation screen. Click “Run” to start the installation and follow the instructions to complete.



NOTE: If you find a message pop-up as below from **Windows Program Compatibility Assistant**, select “**This program installed correctly**” to continue.



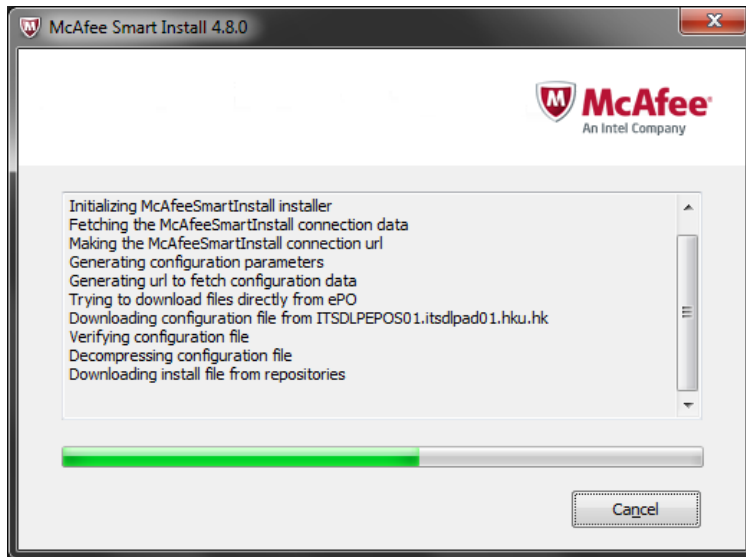
Document Name: DLP Software Deployment Procedure (Internet Explorer version 11)

Version: 1.1

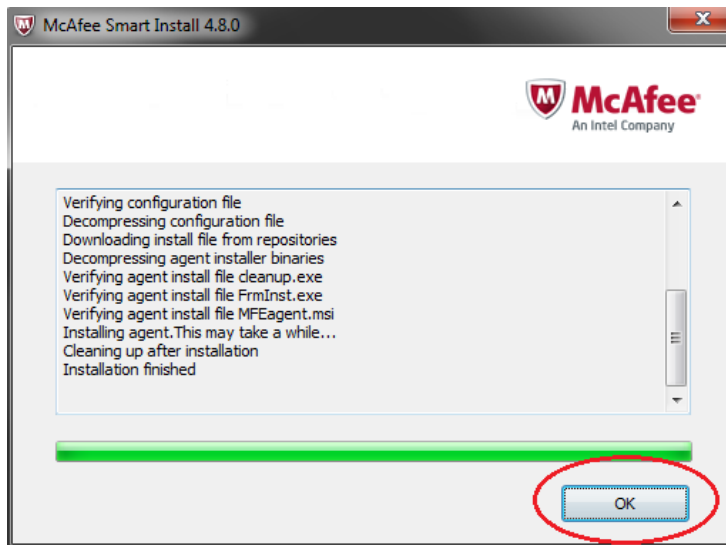
Date: April 9, 2014

Total no. of pages: 7

VII) The installation package will run.



VIII) Click "OK" to complete the installation.



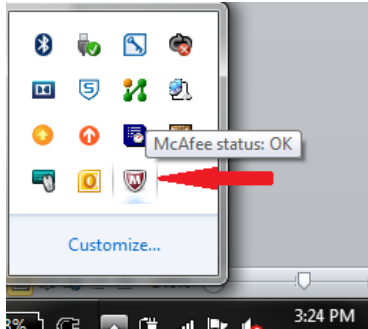
Document Name: DLP Software Deployment Procedure (Internet Explorer version 11)

Version: 1.1

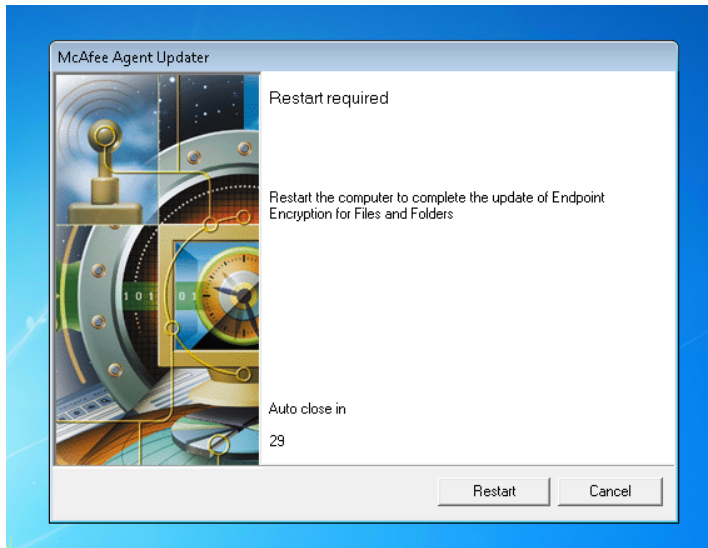
Date: April 9, 2014

Total no. of pages: 7

- IX) After the installation is completed, you will see a McAfee icon same as below appear in the Windows toolbar.



- X) A pop-up message will appear for restart of the machine. You can click "**Restart**" to restart the machine now or click "**Cancel**" to restart later. A restart is required to continue the communication between DLP client and server to complete the policy synchronization.



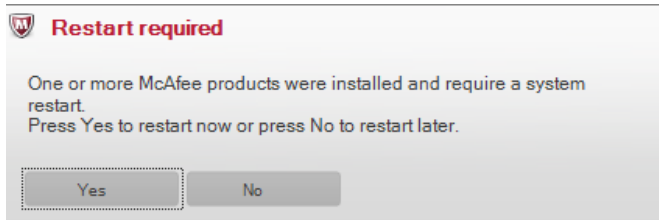
Document Name: DLP Software Deployment Procedure (Internet Explorer version 11)


Version: 1.1

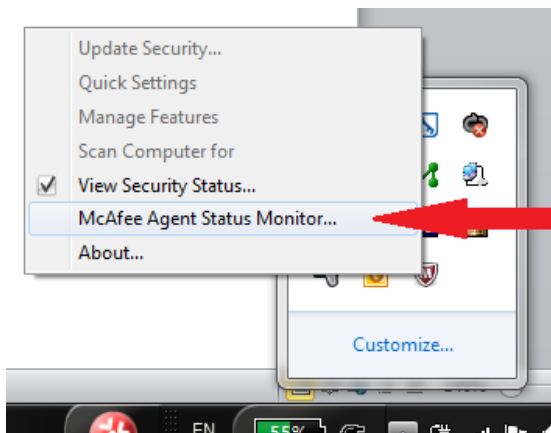
Date: April 9, 2014

Total no. of pages: 7

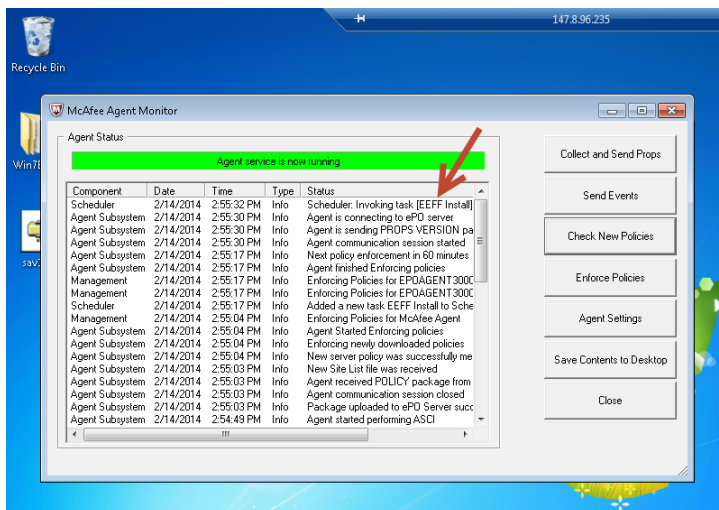
- XI) If you do not restart the machine, the pop-up message for restart will be closed after 30 seconds and a reminder message will appear in Windows toolbar to remind you to restart.




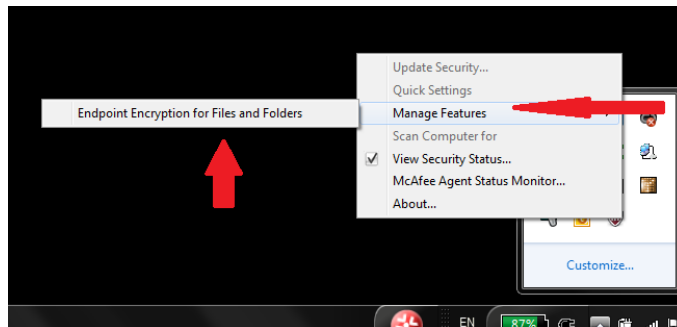
- XII) To view the status you can right click the McAfee icon  and select "McAfee Agent Status Monitor".



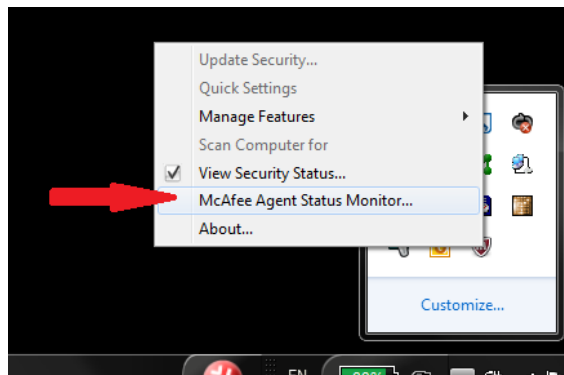
- XIII) You can see a task "EEFF install" is invoked in the monitor console.



- XIV) Save your work and restart the machine to enforce the policy synchronization. After restart, click on the McAfee icon  in the Windows toolbar, and then click on **“Managed Features”** you should find the **“Endpoint Encryption for Files and Folders”** module.



- XV) Click **“McAfee Agent Status Monitor”** from McAfee icon.



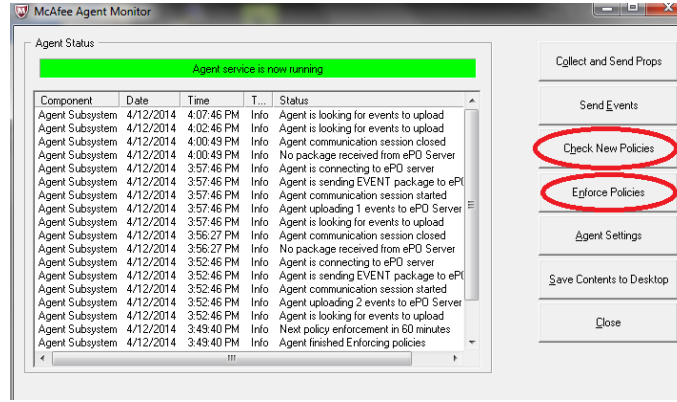
Document Name: DLP Software Deployment Procedure (Internet Explorer version 11)

Version: 1.1

Date: April 9, 2014

Total no. of pages: 7

- XVI) Click **“Check New Policies”** and then **“Enforce Policies”** buttons to enforce the data encryption policy.



--- End ---